



Press Contact

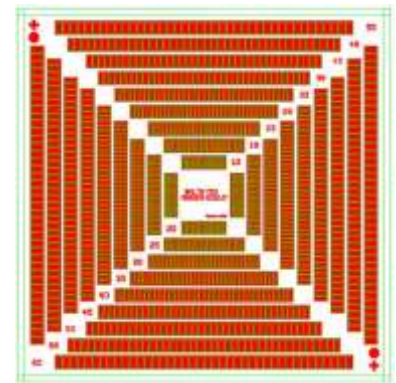
Practical Components Inc.
10762 Noel St. Los Alamitos, CA 90720
714-252-0010; Fax: 714-252-0026
E-mail: mkennedy@practicalcomponents.com
Web site: www.practicalcomponents.com

FOR IMMEDIATE RELEASE

Practical Components to Debut Advanced Technologies at IWLPC

LOS ALAMITOS, CA — September 2019 — Practical Components, the leading international distributor of mechanical IC samples or “dummy” components, announces that it will exhibit in booth 31 at the 2019 International Wafer-Level Packaging Conference (IWLPC) from October 22-23, 2019 at DoubleTree by Hilton in San Jose, CA. Practical Components has added many new Test Wafers for miniaturized Surface Mount Technology (SMT) to its array of Dummy Components, Solder Training Kits and PCB Evaluation Kits.

New at this year’s conference, Practical will introduce the MB6020-0102JY advanced test wafer, which is the most challenging wafer to date. This 8" wafer contains 3.0mm daisy chained chips that enable users to experiment and refine the process with pad pitches of 60/55/50/45/40/35/30/25/and 20µm on each chip.



Also new this year is the Practical IPC/WHMA-A-620 Space Addendum Wire Harness Cable Training Kit. IPC/WHMA-A-620C-S provides additional



Practical IPC/WHMA-A-620 Space Addendum Wire Harness Cable Training Kit.

requirements to IPC/WHMA-A-620C to ensure the reliability of cable and wire harness assemblies that must survive the vibration and thermal cyclic environments getting to and operating in space. The IPC/WHMA-A-620C-S space addendum kit is to be used in conjunction with the Practical IPC/WHMA-A-620 kit.

Practical Components also will feature Dummy Amkor eWLP-Wafers .4-CuPd-DC-NB 8" wafer-embedded copper pads, Dummy Amkor CSPnl-Wafers .4-DC-SAC405 8" wafers with SAC405 ball daisy-chained 0.4 mm pitch, Amkor 0.3 mm CVBGA and Test Vehicle and Jabil Solder Paste Evaluation Board and Kit.

Practical has supplies for all of today’s essential technologies as well the products needed for companies to advance their products, technologies, processes and understanding into the future.

IWLPC brings together the semiconductor industry’s most respected authorities addressing all aspects of Wafer-Level Packaging, 3D and Advanced Manufacturing and Test. Going into its 16th year the IWLPC is co-produced by Chip Scale Review, the leading international magazine addressing the semiconductor packaging industry and SMTA, the distinguished global association in electronic assembly and manufacturing.

To learn more about Practical Components’ product offerings and capabilities, stop by booth 31 at IWLPC or visit www.practicalcomponents.com.

###

About Practical Components®

Practical Components is a team of dedicated electronics industry professionals offering value pricing, on-time delivery, and superior service to customers. The Practical Components team is ready to provide project assistance in the areas of technical component knowledge, drawings, component land patterns and PCB practice kits.